

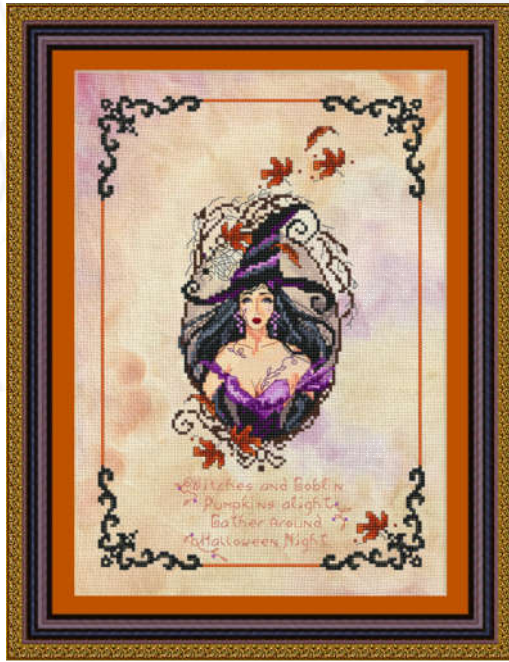
# Material list - Lista materiali

## DMC Floss list

211  
310  
317  
321  
400  
413  
414  
451  
452  
453  
550  
552  
553  
554  
632  
754  
758  
814  
819  
844  
920  
945  
951  
3031  
3072  
3371  
3770  
3776  
3866

BLANC

632 Back Stitch Only



With Precious Petal



With a off white fabric

### **OPTIONAL special fabric — Tessuto sfumato FACOLTATIVO**

Fabric: 14ct Aida " Precious Petal" Size: fat quarter ( 50 x 55 cm)

<https://www.crossstitchboutique.com/sweet-stash-hand-dyed-fabrics/precious-petals>

*Dimensioni del ricamo in punti 106 in larghezza x 154 in altezza*

*Ingombro del ricamo finito è di circa cm 32 in larghezza x cm 36 in altezza,*

*Il modello può essere ricamato su 14ct Aida fat quarter ( 50 x 55 cm) " Precious Petal " by Cross stitch boutique*

*Model could be stitched on 14ct Aida " Precious Petal" by Cross stitch boutique*

*Size: fat quarter ( 50 x 55 cm)*

<https://www.crossstitchboutique.com/sweet-stash-hand-dyed-fabrics/precious-petals>

*Stitch Count 106 x 154*

### **OPTIONAL special materials — Materiali speciali FACOLTATIVI,**

*If you desire give sparkle to the witch, you can use Petite Treasure braid by Rainbow Gallery instead of DMC or blend them together... make the changing or the blending follow these key list*

*Nel caso in cui desideraste dare un tocco di luccichio alla strega, potete sostituire o addirittura usarli insieme, i filati moulinè DMC con i filati metallici Petite Treasure Braid della Rainbow Gallery utilizzando la legenda riportata qui sotto:*

### **Rainbow Gallery treasure Braid**

PB05 + DMC 310

PB11 + DMC 550

PB48 + DMC 3776

PB65 + DMC 554

PB205 + DMC 211