

Angelic art

Get in a festive mood with our selection of Christmas charts by Laura Lattuada

ROMANTIC STYLE

Italian cross stitch designer Laura Lattuada has been passionate about drawing since she was a young child, and it's a hobby that she continued to enjoy into her adult life. Her artistic talents led her to work as a graphic and web designer in Italy and then, during three months spent in England honing her language skills, Laura met an avid stitcher and fell in love with cross stitch herself. Back in Italy, Laura's designing career went from strength to strength as she began to create some stunning cross stitch pictures. This selection of Christmas designs are typical of Laura's romantic style, and you can see even more of her range at www.passionericamo.com.

JENNY CROMBIE

MERRY LITTLE CHRISTMAS

If you're looking for an impressive and unusual decoration to adorn your home for the festive period, look no further than this elegant design. A serene mother reads a Christmas tale to her angelic children by an ornate Christmas tree. Although large, this chart is easy to follow and straightforward to stitch – don't rush and concentrate on one area at a time. The scene includes a heavy sprinkling of beads to add texture and depth and four shades of Kreinik braid for some festive sparkle. Instructions and information are included for you in both English and Italian.

FABRIC: 32-count summer khaki Belfast linen by Zweigart
STITCH COUNT: 160 x 220
DESIGN AREA: 10 x 13³/₄in (25 x 34.5cm)
COST: £12.45



LITTLE CHRISTMAS ANGELS

This chart includes some beautifully rich thread shades to emphasise the traditional Christmas style of these cherubic cuties. The goodwill message is in French, which not only adds a sense of class to the design, but will make it a real talking point as it sits above the mantelpiece in your home. The picture is created using just 22 thread colours, plus extra shades to add the backstitch detail. The design should take around two months to stitch and although it's large, there are considerable areas that remain



unstitched, which adds to both the traditional effect of the picture, and the ease of stitching it.

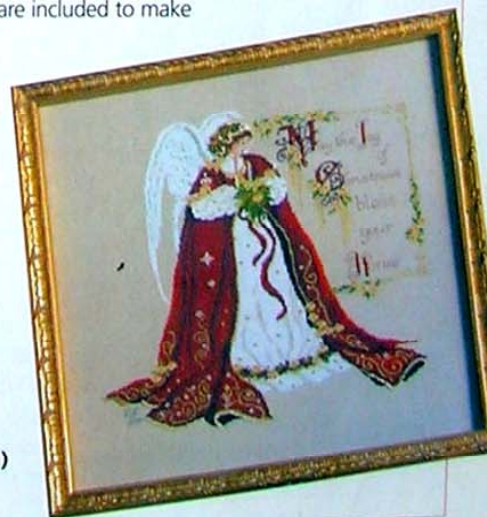
FABRIC: 32-count Jobelan lambswool
STITCH COUNT: 240 x 150
DESIGN AREA: 15 x 9in (37.5cm x 22.5cm)
COST: £12.45

THE CHRISTMAS BLESSING ANGEL

Stitch this enchanting angel to make a sumptuous picture for someone special this Christmas. With her joyful message and romantic robes billowing around her, this heavenly beauty makes for a stunning traditional-style design. The large black and white chart is easy to read, which makes this design an enjoyable challenge. DMC and Venus thread shades are listed to stitch this picture, and straightforward backstitch instructions are included to make

adding the detail and outlines nice and simple. Mill Hill beads and Kreinik threads add an additional element of festive shimmer that complements the rich, deep shades of the rest of this design.

FABRIC: 32-count Jobelan lambswool
STITCH COUNT: 230 x 230
DESIGN AREA: 14 x 14in (35 x 35cm)
COST: £12.45



STOCKISTS

Ask your local needlecraft store or supplier for the charts reviewed here. If they don't have them in stock they may be able to order them for you. Wimble Bees stocks all three of these charts. You can contact them on 01243 532 555 or visit www.wimblebees.com to buy the charts online.